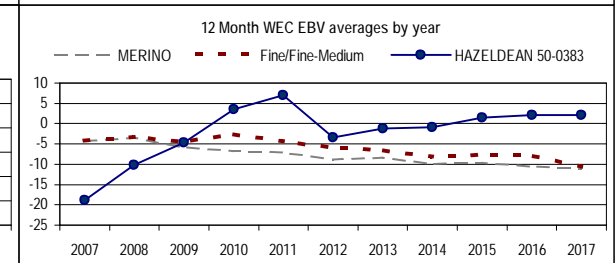
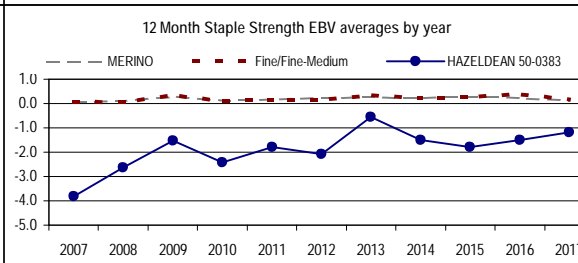
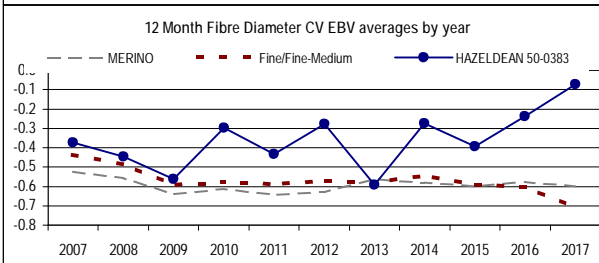
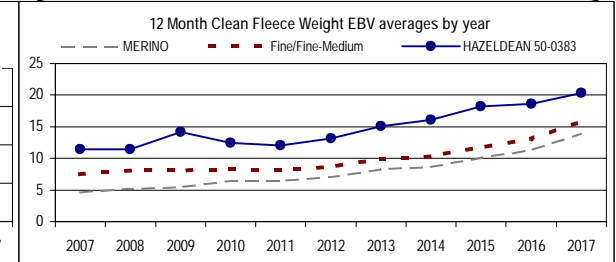
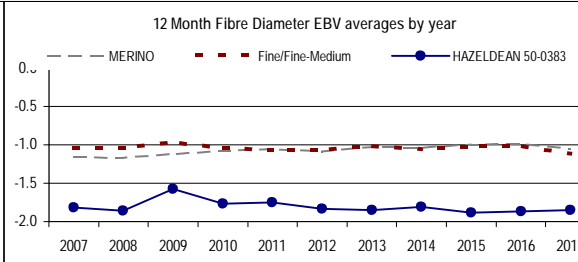
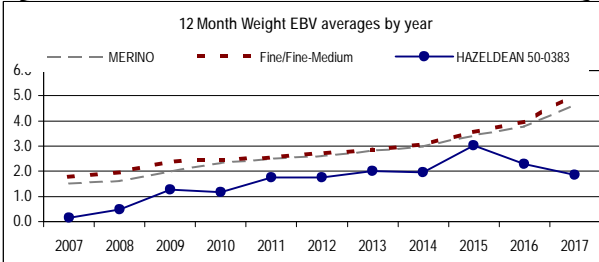
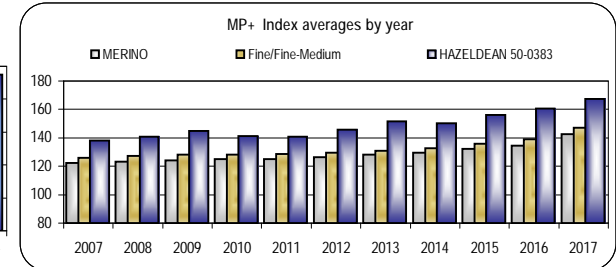
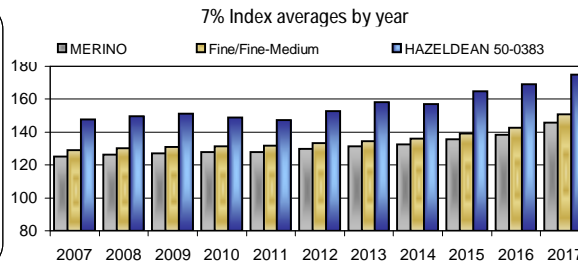
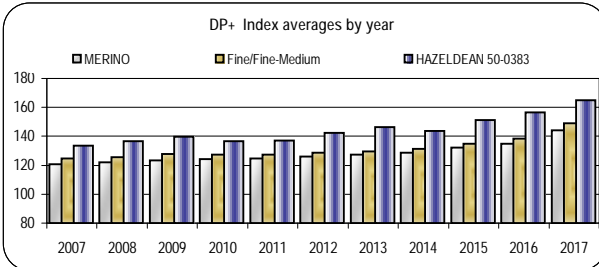


HAZELDEAN
HAZELDEAN PASTORAL CO
50-0383

Analysis : MERINO



Dated : 21-Dec-17



HAZELDEAN 50-0383												7%	
	Ywt	Yfd	Ycfw%	Yfdcv%	Ysl	Yss	Nlw%	Ywec%	Ywt	Yfat	Yemd	MP+	Counts
2008	0.5	-1.9	11.5	-0.4	3.7	-2.6	2.1	-10	0.5	-0.57	-0.27	140.8	2445
2009	1.3	-1.6	14.1	-0.6	3.4	-1.5	0.7	-5	1.3	-0.49	-0.23	144.7	1790
2010	1.2	-1.8	12.5	-0.3	3.4	-2.4	0.5	3	1.2	-0.47	-0.20	141.2	2995
2011	1.8	-1.7	12.1	-0.4	2.9	-1.8	-0.1	7	1.8	-0.36	-0.06	140.9	3046
2012	1.8	-1.8	13.2	-0.3	3.3	-2.1	1.3	-3	1.8	-0.50	-0.23	145.9	3536
2013	2.0	-1.8	15.1	-0.6	4.4	-0.6	1.2	-1	2.0	-0.53	-0.29	151.6	3088
2014	2.0	-1.8	16.1	-0.3	3.9	-1.5	0.6	-1	2.0	-0.49	-0.40	150.4	2700
2015	3.0	-1.9	18.2	-0.4	4.6	-1.8	2.7	2	3.0	-0.39	-0.37	156.1	3315
2016	2.3	-1.9	18.6	-0.2	4.2	-1.5	5.5	2	2.3	-0.49	-0.43	160.8	3461
2017	1.8	-1.9	20.4	-0.1	4.0	-1.2	8.1	2	1.8	-0.48	-0.44	167.5	3944



Linkage	
Fleece	Yes
Wls	Yes
Carcase	Yes
Wec	Yes
Reproduction	No

Reports are prepared using data supplied by breeders and/or accredited operators. We cannot guarantee the accuracy of this data. ASBV's are designed to estimate genetic merit of animals from the data supplied. The reports are provided to assist breeders but no liability is accepted for the outcome resulting from the use of this information.