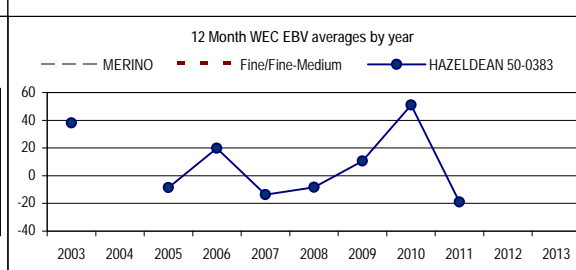
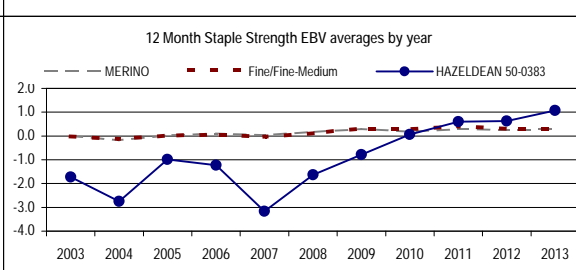
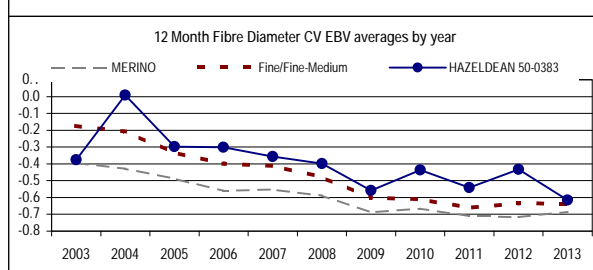
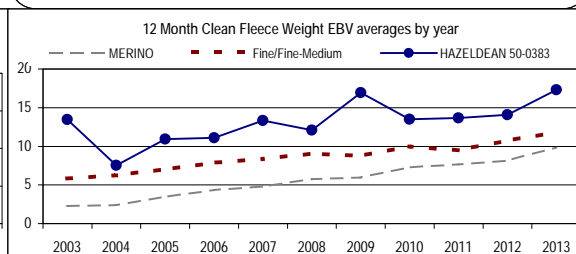
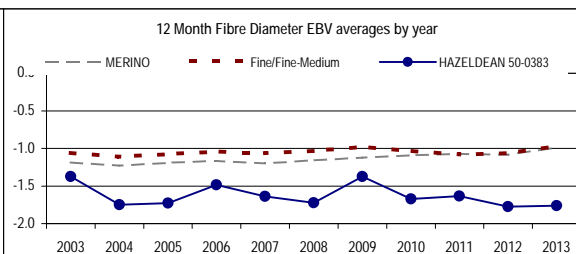
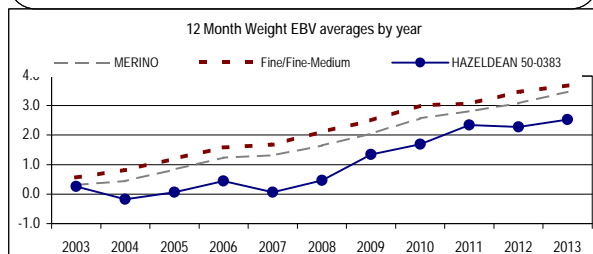
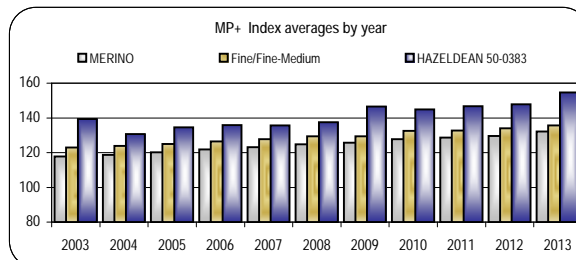
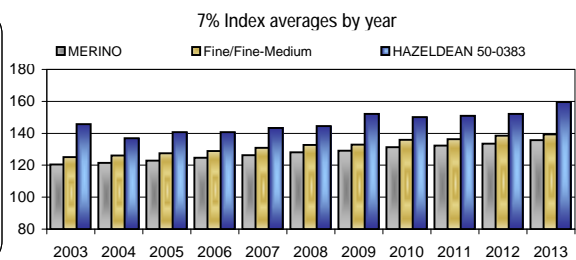
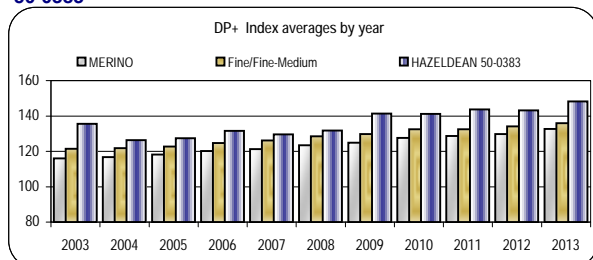


**HAZELDEAN**  
HAZELDEAN PASTORAL CO  
50-0383

Analysis : MERINO



Dated : 7-Aug-14



HAZELDEAN 50-0383													7%		
	Ywt	Yfd	Ycfw%	Yfdcv%	Ysl	Yss	NIw%	Ywec%	Ywt	Yfat	Yemd	MP+	▼	Counts	
2004	-0.2	-1.7	7.5	0.0	3.2	-2.7	-1.2		-0.2	-0.43	-0.24	130.6	136.9	1613	
2005	0.1	-1.7	10.9	-0.3	4.2	-1.0	-4.3	-9	0.1	-0.48	-0.17	134.6	140.7	1164	
2006	0.4	-1.5	11.1	-0.3	4.4	-1.2	-2.3	20	0.4	-0.37	-0.18	135.9	140.6	1067	
2007	0.1	-1.6	13.3	-0.4	7.7	-3.2	-3.7	-14	0.1	-0.53	-0.39	135.7	143.4	1198	
2008	0.5	-1.7	12.1	-0.4	5.9	-1.6	-2.3	-8	0.5	-0.46	-0.24	137.6	144.5	2378	
2009	1.3	-1.4	17.0	-0.6	6.9	-0.8	-1.2	11	1.3	-0.39	-0.28	146.5	152.2	1568	
2010	1.7	-1.7	13.5	-0.4	4.3	0.1	0.1	51	1.7	-0.25	0.12	144.8	150.1	2975	
2011	2.3	-1.6	13.7	-0.5	3.5	0.6	0.5	-19	2.3	-0.18	0.20	146.8	150.9	2987	
2012	2.3	-1.8	14.1	-0.4	3.6	0.6	-0.4		2.3	-0.22	0.16	147.8	152.1	3380	
2013	2.5	-1.8	17.3	-0.6	5.7	1.1	-0.3		2.5	-0.34	-0.10	154.6	159.5	1496	

Linkage	
Fleece	Yes
Wts	Yes
Carcase	No
Wec	No
Reproduction	No

Reports are prepared using data supplied by breeders and/or accredited operators. We cannot guarantee the accuracy of this data. ASBV's are designed to estimate genetic merit of animals from the data supplied. The reports are provided to assist breeders but no liability is accepted for the outcome resulting from the use of this information.