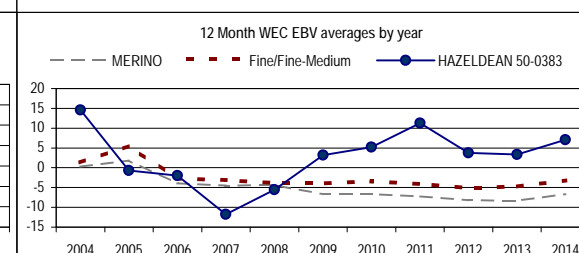
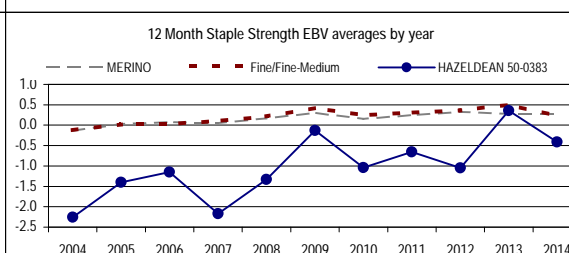
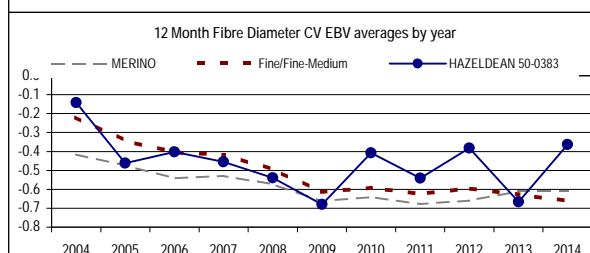
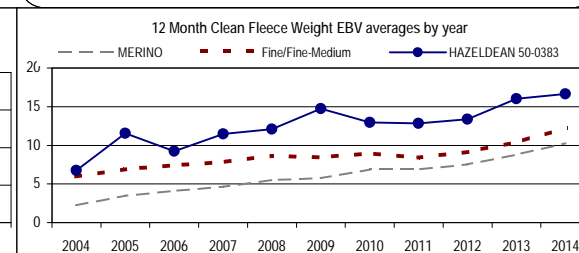
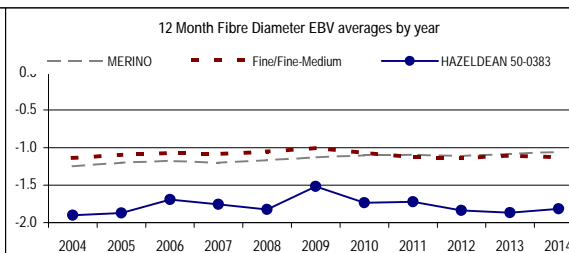
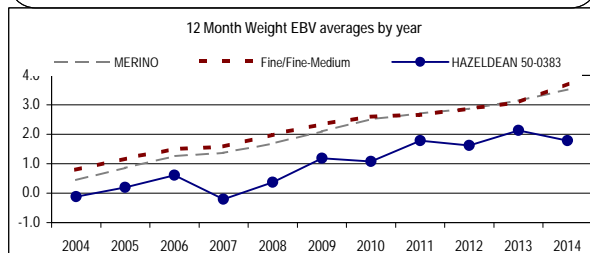
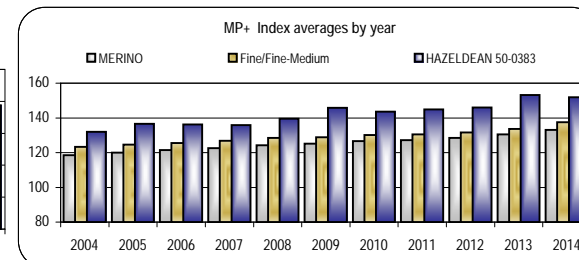
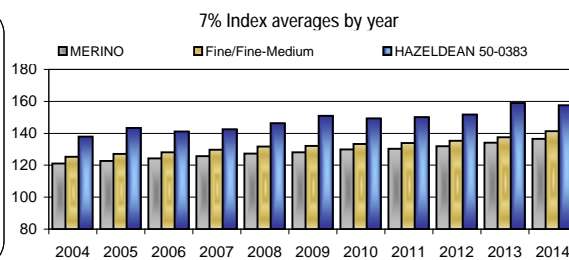
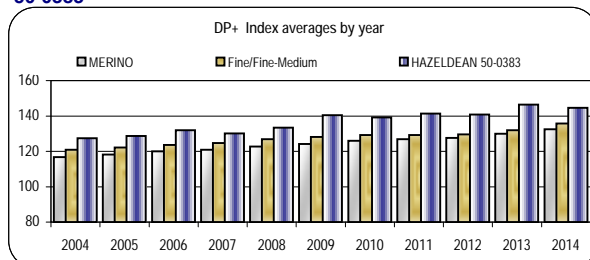


HAZELDEAN
HAZELDEAN PASTORAL CO
50-0383


Analysis : MERINO



Dated : 21-Jul-15



HAZELDEAN 50-0383													7%		Counts
Ywt	Yfd	Ycfw%	Yfdcv%	Ysl	Yss	Nlw%	Ywec%	Ywt	Yfat	Yemd	MP+	▼			
2005	0.2	-1.9	11.5	-0.5	4.0	-1.4	-3.8	-1	0.2	-0.54	-0.18	136.6	143.3	1164	
2006	0.6	-1.7	9.2	-0.4	3.4	-1.2	-1.4	-2	0.6	-0.34	-0.09	136.3	141.0	1406	
2007	-0.2	-1.8	11.5	-0.5	5.0	-2.2	-3.3	-12	-0.2	-0.58	-0.17	135.9	142.5	1231	
2008	0.4	-1.8	12.1	-0.5	5.0	-1.3	-1.9	-6	0.4	-0.50	-0.13	139.5	146.3	2415	
2009	1.2	-1.5	14.7	-0.7	5.2	-0.1	-1.1	3	1.2	-0.42	-0.15	145.8	150.9	1708	
2010	1.1	-1.7	13.0	-0.4	4.7	-1.0	-0.6	5	1.1	-0.40	-0.06	143.5	149.4	2983	
2011	1.8	-1.7	12.8	-0.5	4.0	-0.7	0.1	11	1.8	-0.26	0.05	144.9	150.2	3027	
2012	1.6	-1.8	13.4	-0.4	4.4	-1.1	-0.9	4	1.6	-0.38	-0.12	146.0	151.8	3409	
2013	2.1	-1.9	16.0	-0.7	5.7	0.4	-0.7	3	2.1	-0.43	-0.25	153.3	158.9	2880	
2014	1.8	-1.8	16.6	-0.4	5.4	-0.4	-0.5	7	1.8	-0.40	-0.27	151.9	157.6	2609	



Linkage	
Fleece	Yes
Wts	Yes
Carcase	No
Wec	Yes
Reproduction	No

Reports are prepared using data supplied by breeders and/or accredited operators. We cannot guarantee the accuracy of this data. ASBV's are designed to estimate genetic merit of animals from the data supplied. The reports are provided to assist breeders but no liability is accepted for the outcome resulting from the use of this information.